



SUNRISE BEACH
MISSOURI

COMMITMENT

COURAGE

HONOR

SB

343

FIRE

Chief's Report

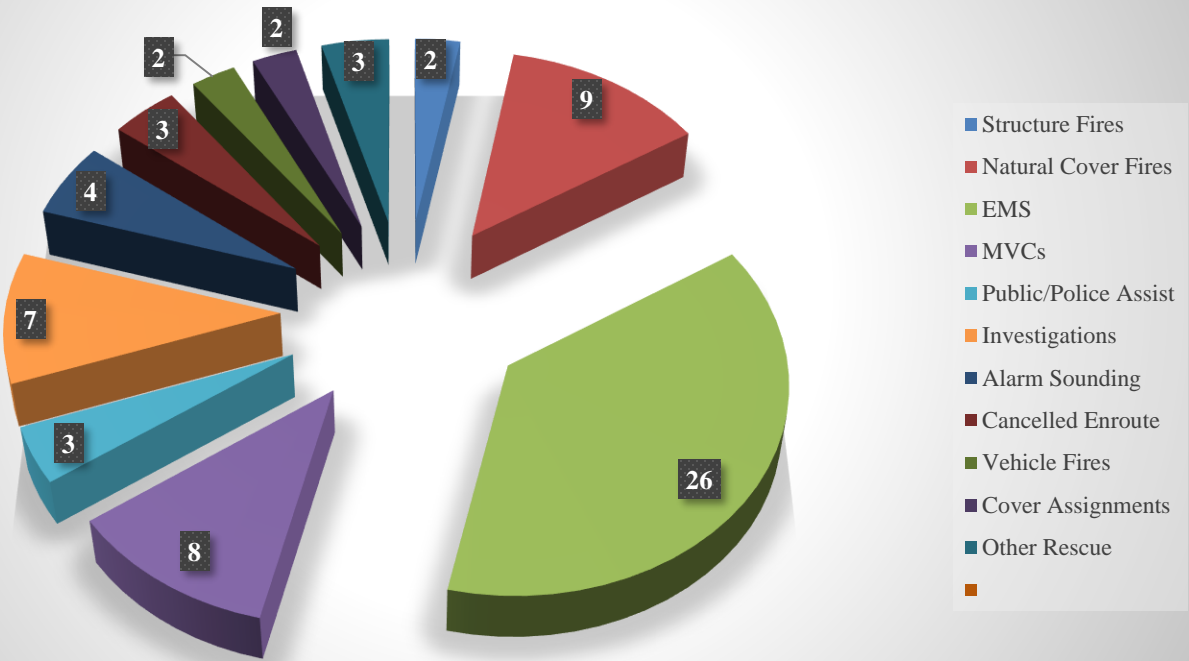
18 April, 2106

1. The District responded to 69 calls for service in the month of March, 2016. This is 21 more runs than in March of 2015. Through the end of March, the District has made 143 responses as compared to 154 responses in the similar period for 2015. During the month of March District members participated in 118 training events for a total of 869.51 staff hours in training.
2. The election results for the 2016 Board election have been received.
3. Recruit Brockman- Herron withdrew from the Recruit Academy and has been replaced by Recruit Zelch. Recruit Zelch joined the Class on Monday of week 2.
4. A/C Criner has been appointed to the 2016 International Association of Fire Chiefs Safety Stand Down working group.
5. We have received notice from the ISO that effective 1 July, 2016 our Public Protection Class will improve to Class 4.
6. Painting has been scheduled for Fire Station3 starting on Monday 25 April, 2016.
7. Jim Wilson has ordered the last of the parts needed to install the radio antenna at Station 3 and that site work should begin in the near future.
8. I am finalizing the supplemental material for the 2015 audit and expect Graves & Associates to present the audit at the May meeting.
9. I have received a serous inquiry regarding the sale of the Metz aerial. I will keep the Board informed regarding this matter.
10. Notices have been sent to all businesses that will require an on – going life safety inspection. The CFM is in the process of doing follow – ups and scheduling.

Fleet Status

- The annual services & DOT inspections are on – going.
- We expect delivery of the 2nd Ford Interceptor in the immediate future.

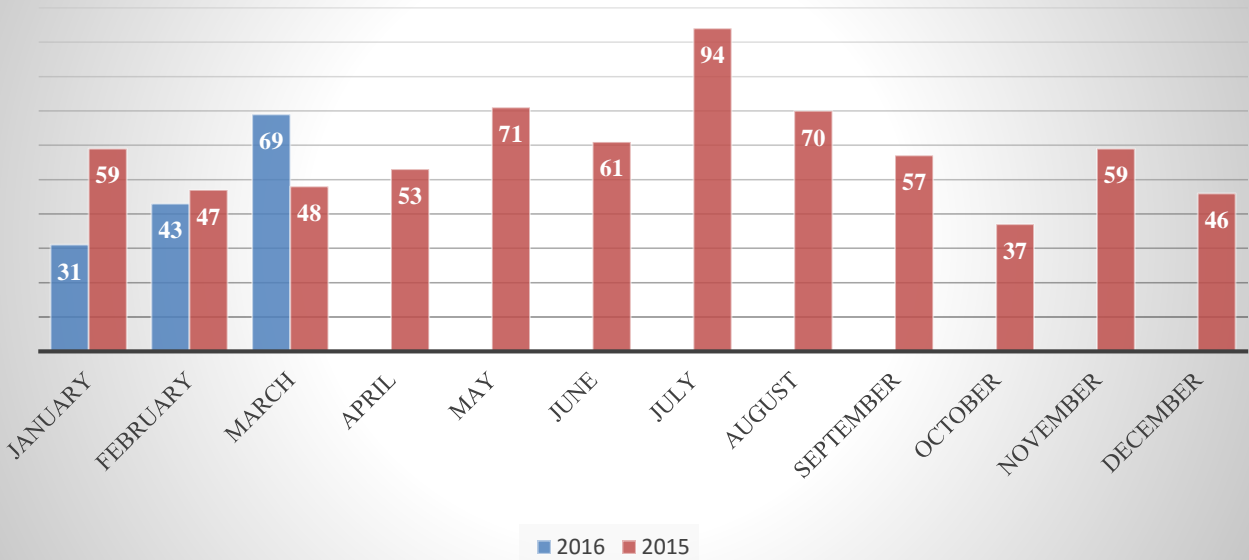
Run Distribution by Type of Incident March, 2016



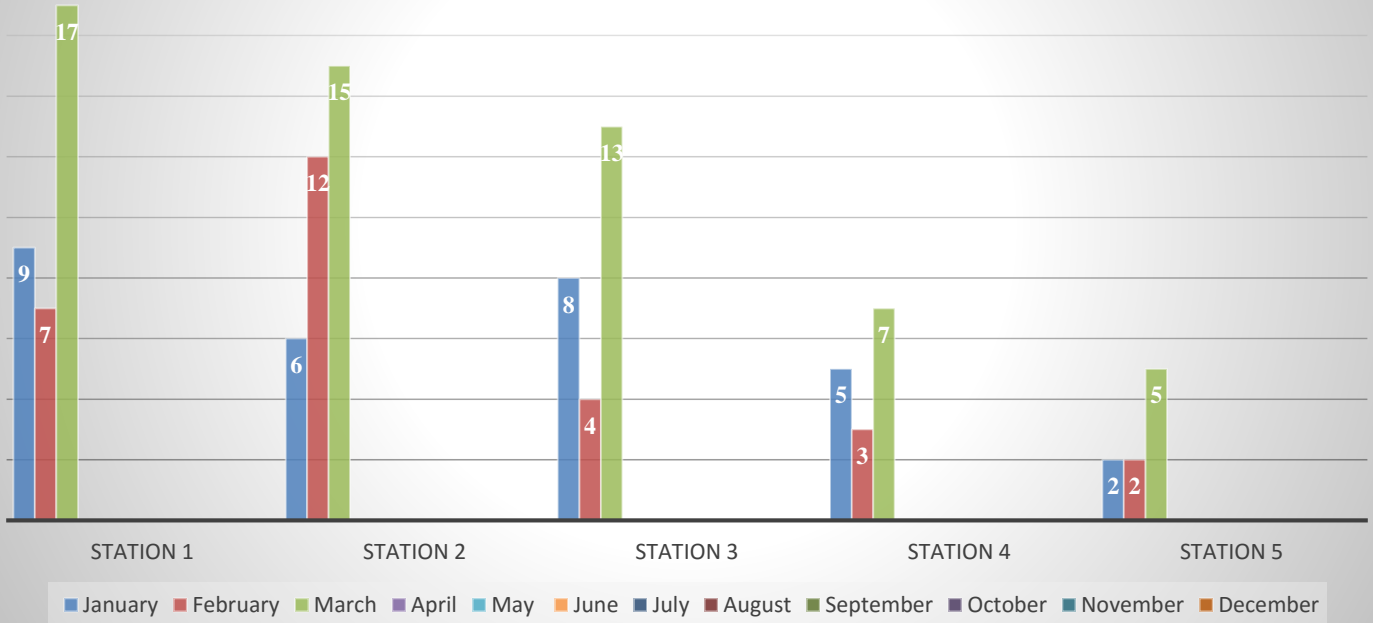
37% of the call volume for the month of March was EMS related.

63% of the call volume for the month of March was non – EMS centered.

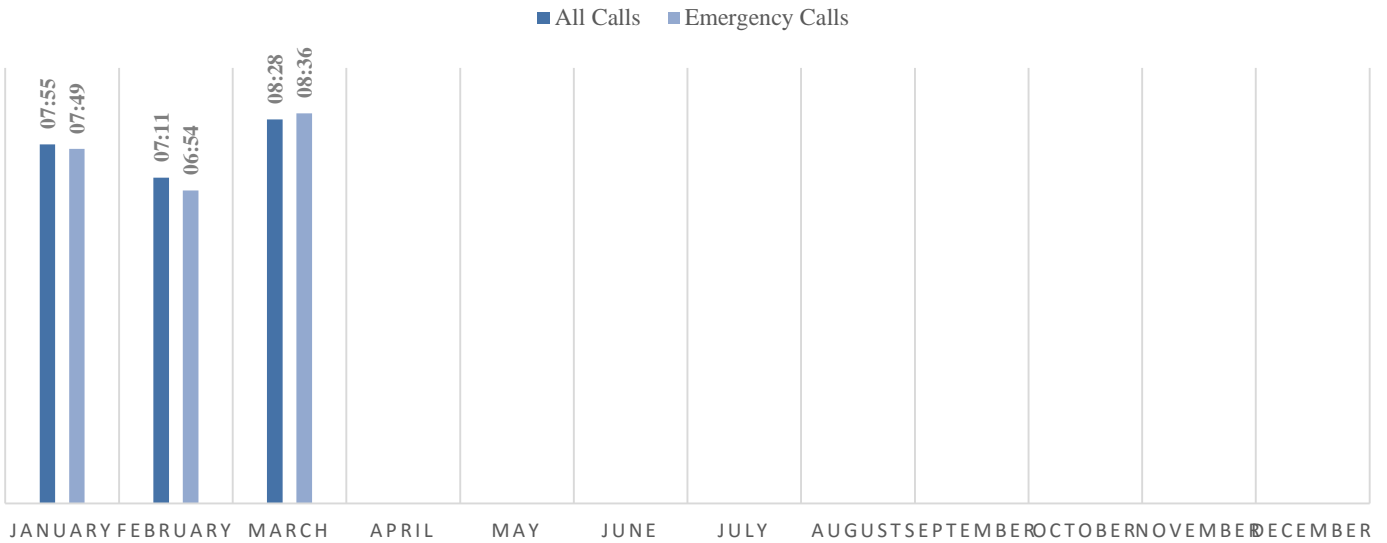
Responses per Month



Monthly Incident Counts by Station Excluding Aid Given

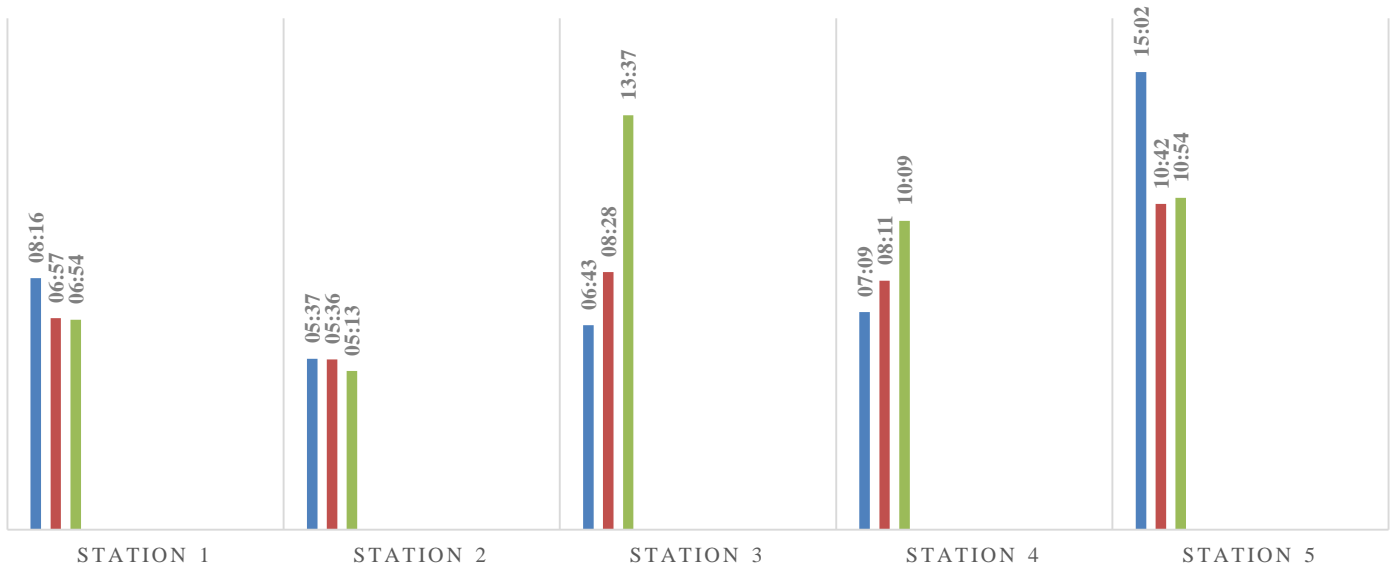


AVERAGE ON-SCENE TIME OF FIRST ARRIVING UNIT

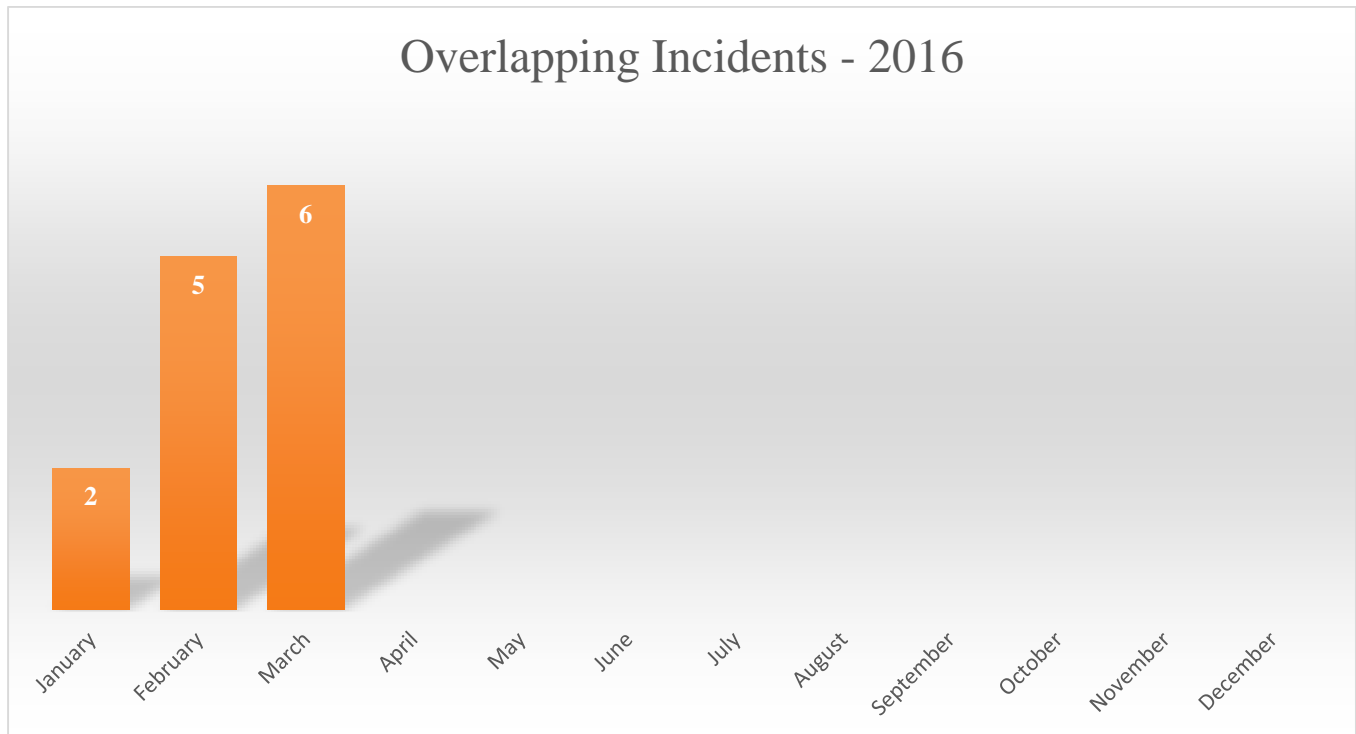


EMERGENCY INCIDENT ON-SCENE TIMES BY STATION

■ January
 ■ February
 ■ March
 ■ April
 ■ May
 ■ June
 ■ July
 ■ August
 ■ September
 ■ October
 ■ November
 ■ December



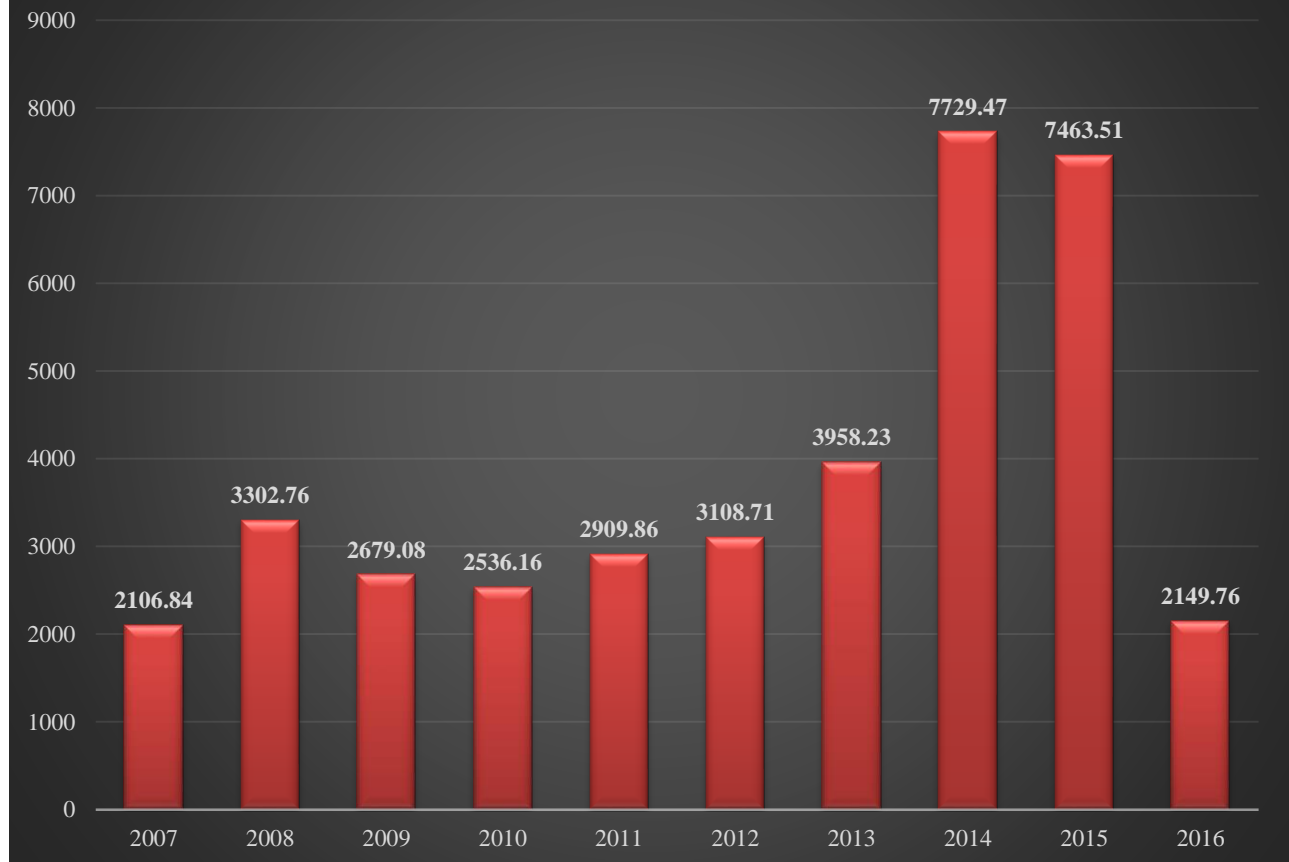
Overlapping Incidents - 2016



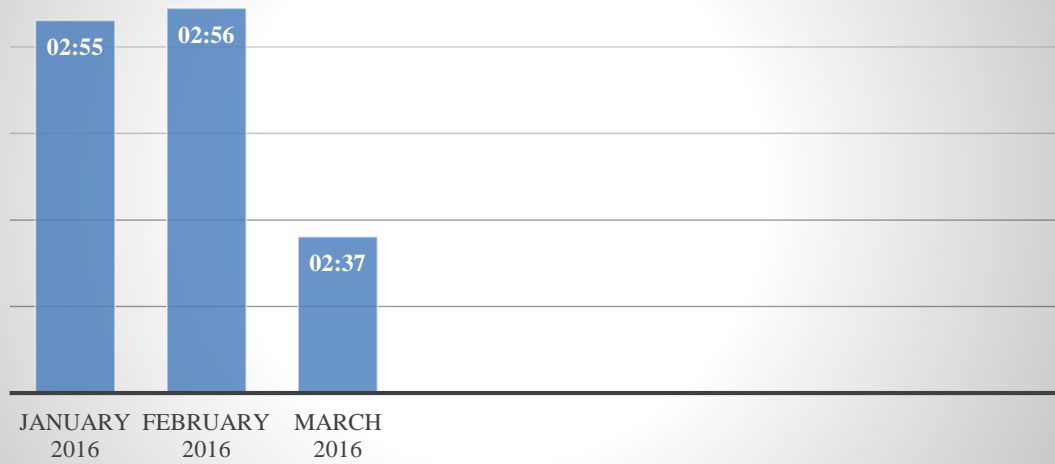
Average Training Hours per Person



Total Training Hours per Year



Average Dispatch Processing Time



Respectfully Submitted: _____

Fire Chief

